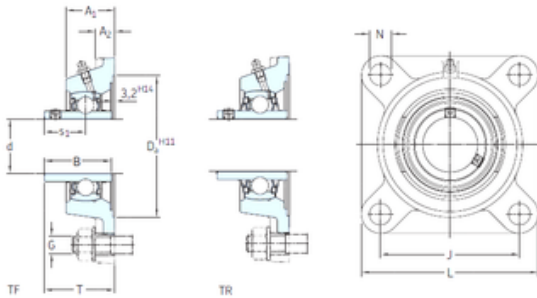




# BEARING-THAILAND CO.,LTD.

## SKF FYJ 40 TF bearing units

Bearing No. FYJ 40 TF



FYJ 40 TF Bearing 2D drawings and 3D CAD models

|                               |                            |
|-------------------------------|----------------------------|
| Bore Diameter                 | 40 mm                      |
| d                             | 40 mm                      |
| Da                            | 115,9 mm                   |
| s1                            | 30,2 mm                    |
| A1                            | 36 mm                      |
| B                             | 49,2 mm                    |
| G                             | 14 mm                      |
| J                             | 102 mm                     |
| L                             | 130 mm                     |
| N                             | 16 mm                      |
| T                             | 51,2 mm                    |
| A2                            | 16 mm                      |
| Weight                        | 1,8 Kg                     |
| Basic dynamic load rating (C) | 30,7 kN                    |
| Basic static load rating (C0) | 19 kN                      |
| Fatigue load limit (Pu)       | 0,8                        |
| Category                      | Flange Block Bearings      |
| Inventory                     | 0.0                        |
| Manufacturer Name             | SKF                        |
| Minimum Buy Quantity          | N/A                        |
| Weight / Kilogram             | 1.8                        |
| EAN                           | 7316570152593              |
| Product Group                 | M06110                     |
| Number of Mounting Holes      | 4                          |
| Mounting Method               | Set Screw                  |
| Housing Style                 | 4 Bolt Square Flange Block |



## BEARING-THAILAND CO.,LTD.

|                                    |  |
|------------------------------------|--|
| Rolling Element                    | Ball Bearing   |
| Housing Material                   | Cast Iron  |
| Expansion / Non-expansion          | Non-expansion  |
| Mounting Bolts                     | 14 Millimeter  |
| Relubricatable                     | Yes  |
| Insert Part Number                 | YAR 208-2F   |
| Seals                              | M Seal   |
| Housing Configuration              | 1 Piece Solid  |
| Pilot Configuration                | No Pilot   |
| Inch - Metric                      | Metric   |
| Long Description                   | 4 Bolt Square Flange Block; 40MM Bore; 144MM Bolt Circle; 102MM Bolt Spacing; 1 Piece Solid; Set Screw Mount; Cast Iron; Ball Bearing; 49.2MM Length Thru Bore; Relubricatable; M Seal Seals |
| Other Features                     | Single Row   Wide Inner Race   Open End   Has Flinger   Y Bearing  |
| Category                           | Flange Block   |
| UNSPSC                             | 31171501   |
| Harmonized Tariff Code             | 8483.20.40.40  |
| Noun                               | Bearing  |
| Keyword String                     | Flanged  |
| Manufacturer URL                   | <a href="http://www.skf.com">http://www.skf.com</a>  |
| Manufacturer Item Number           | FYJ 40 TF  |
| Weight / LBS                       | 3.97   |
| Cartridge Pilot Diameter           | 0 Inch   0 Millimeter  |
| Length Thru Bore                   | 1.937 Inch   49.2 Millimeter   |
| Bore                               | 1.575 Inch   40 Millimeter   |
| Nominal Bolt Circle Diameter Round | 5.7 Inch   144 Millimeter  |
| Cartridge Pilot Depth              | 0 Inch   0 Millimeter  |
|                                    |  |



## BEARING-THAILAND CO.,LTD.

|                               |                                   |
|-------------------------------|-----------------------------------|
| Bolt Spacing                  | 4 Inch   102 Millimeter           |
| bore diameter:                | 40 mm                             |
| radial dynamic load capacity: | 30.7 kN                           |
| bolt center-to-center length: | 102 mm                            |
| radial static load capacity:  | 19 kN                             |
| overall length/diameter:      | 130 mm                            |
| length through bore:          | 49.2 mm                           |
| overall height:               | 51.2 mm                           |
| finish/coating:               | Blue Alkyd/Acryl Paint (RAL 5007) |
| bore type:                    | Round                             |
| bolt size:                    | 16 mm                             |
| mounting type:                | Four-Bolt Flange                  |
| maximum rpm:                  | 4800 rpm                          |
| housing material:             | Cast Iron                         |
| lubrication type:             | Lubrication Fitting               |
| locking device:               | Set Screw                         |
| series:                       | FYJ                               |
| expansion type:               | Non-Expansion Bearing (Fixed)     |
| manufacturer product page:    | <a href="#">Click here</a>        |
| bearing material:             | Steel                             |
| manufacturer upc number:      | 7316570152593                     |
| Housing material              | Cast iron                         |
| $D_a$                         | 115.9 mm                          |
| $D_{b1}$                      | 99 mm                             |
| $D_{b2}$                      | 107 mm                            |
| A                             | 36 mm                             |
| $A_1$                         | 14 mm                             |
| $A_3$                         | 3.2 mm                            |
| $s_1$                         | 30.2 mm                           |
| $R_G$                         | 1/4-28 UNF                        |
|                               |                                   |



## BEARING-THAILAND CO.,LTD.

|   |               |
|---|---------------|
| $R_1$   | 23 mm         |
| $D_N$   | 6.5 mm        |
| $SW_N$  | 7 mm          |
| $G_N$   | 1/4-28 SAE-LT |
| $J_6$   | 118 mm        |
| $J_7$   | 34 mm         |
| $N_4$   | 4 mm          |
| Basic dynamic load rating C                       | 30.7 kN       |
| Basic static load rating $C_0$                    | 19 kN         |
| Fatigue load limit $P_u$                          | 0.8 kN        |
| Limiting speed                                    | 4800 r/min    |
| Mass bearing unit                                 | 1.7 kg        |
| Thread grub screw $G_2$                           | M8x1          |
| Hexagonal key size for grub screw N               | 4 mm          |
| Recommended tightening torque for grub screw      | 6.5 N · m     |
| Recommended diameter for attachment bolts, mm G   | 14 mm         |
| Recommended diameter for attachment bolts, inch G | 0.5625 in     |