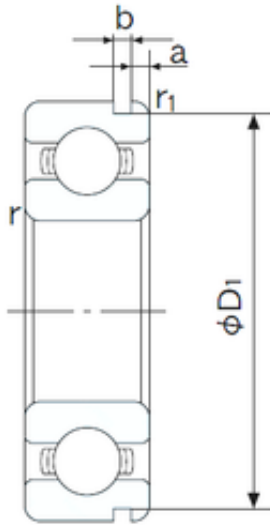




BEARING-THAILAND CO.,LTD.



25 mm x 52 mm x 15 mm NACHI 6205N deep groove ball bearings

Bearing No. 6205N

6205N Bearing 2D drawings and 3D CAD models

Size	25x52x15 mm
Bore Diameter	25 mm
Outer Diameter	52 mm
Width	15 mm
d	25 mm
D	52 mm
B	15 mm
C	15 mm
a	2.46 mm
b	1.35 mm
r min.	1 mm
r1 min.	0.5 mm
D1	49.73 mm
Weight	0.128 Kg
Basic dynamic load rating (C)	14 kN
Basic static load rating (C0)	7,9 kN
(Grease) Lubrication Speed	12000 r/min
Bore Type	Cylindrical Bore
Enclosure	Open
Configuration	Single Row
Bore Size	25 mm
Outside Diameter	52 mm
Width	15 mm
Fillet Radius/Chamfer	1 mm
r1	0.5 mm



BEARING-THAILAND CO.,LTD.

Groove Width	1.4 mm
Groove Diameter	49.7 mm
a (max)	2.5 mm
Dynamic Load Rating	14,000 N
Static Load Rating	7,900 N
Limiting Speed - Grease	13,000 rpm
Limiting Speed - Oil	16,000 rpm
Factor fo	13.9
Radial Clearance	0.005 to 0.020 mm
da (min)	31 mm
Da (max)	46 mm
Dx (min)	58.5 mm
ra (max)	1 mm
Cy (max)	3.3 mm